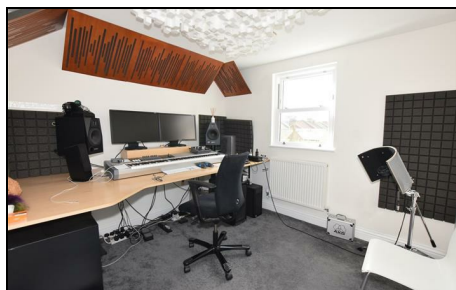


**Robinson Road
Colliers Wood, SW17 9DP**

Offers In The Region Of £565,000 Leasehold - Share of Freehold



A stunning three bedroom split level period maisonette with two luxury bathrooms being larger than many houses and extending to 1064 sq ft of accommodation. Extended in to the loft and offering a large living room, beautiful modern kitchen/dining room. Set in a desirable road a few minutes walk to Colliers Wood station (Northern line) and easy walking distance to Tooting Broadway. Share of Freehold.

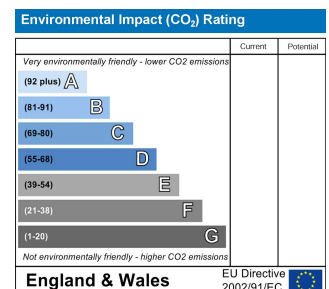
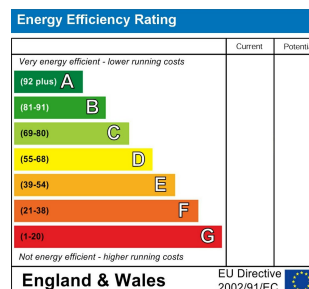
Robinson Road, SW17

Approximate Gross Internal Area
98.9 sq m / 1064 sq ft



This floor plan is for representation purposes only and is not drawn to scale.
The Gross Internal Area includes outbuildings shown on the plan.
Whilst every attempt has been made to ensure the accuracy of the plan measurements of doors, windows and rooms are approximate only and should be checked before making any decisions reliant upon them.
Copyright Bespokeplans.co.uk (ID 392259)

- Split level period flat
- Three double bedrooms
- Sought after location
- Fantastic condition
- EPC Rating TBC
- Near to transport
- lounge/diner



For Free Mortgage Quote and Best Mortgage Rates, call an Ellisons Mortgage Advisor on 020 8544 0518



Although these particulars are believed to be correct, their accuracy is not guaranteed and they do not form part of any contract.

Celebrating 30 years of successful Sales and Lettings in Merton

